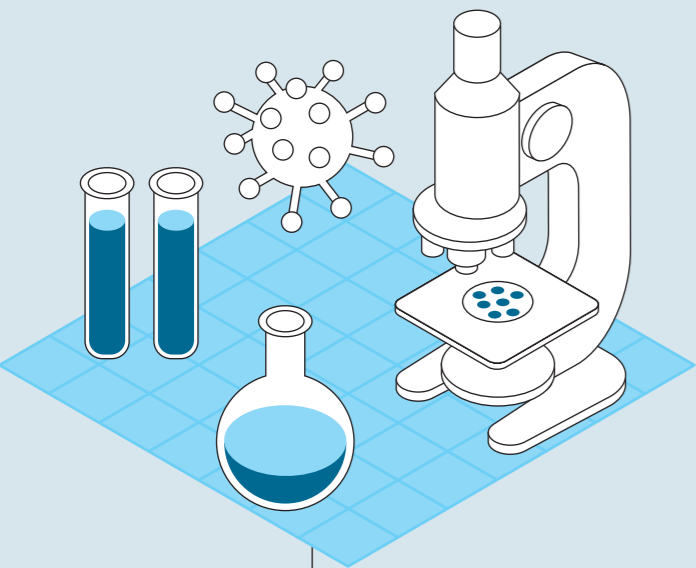
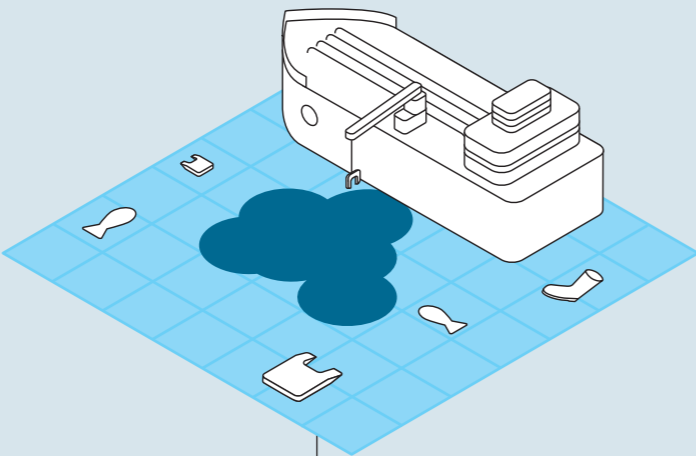
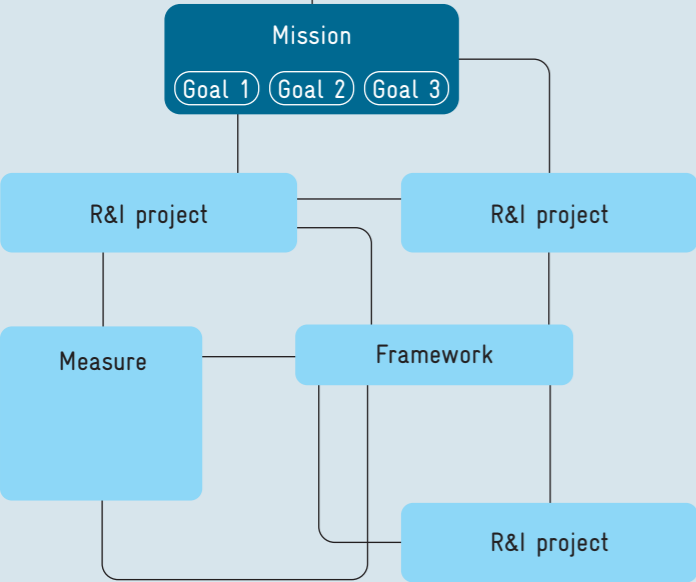


B 1 New Mission Orientation and Agility in R&I Policy

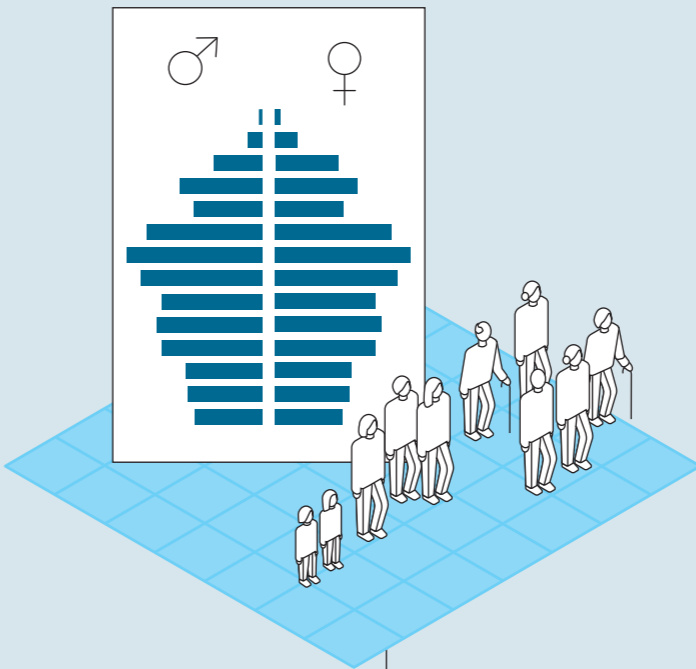
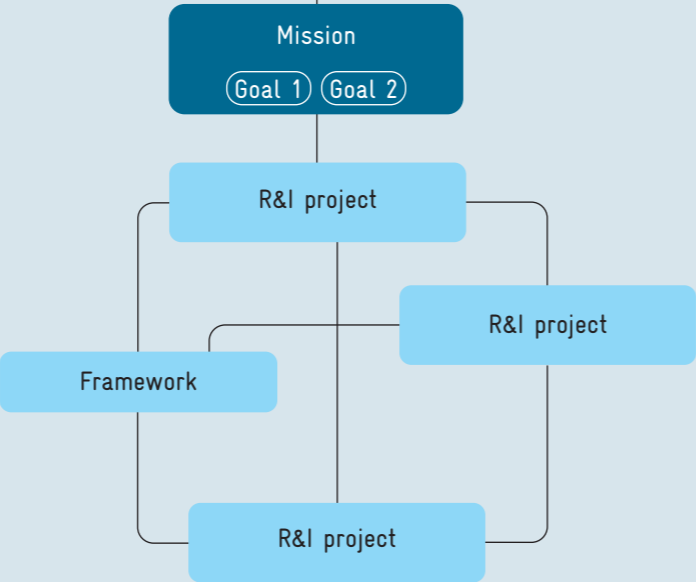
New Mission Orientation is an approach to R&I policy that focuses on addressing grand societal challenges and aims at transformative change in the economy and society. To this end, so-called missions are formulated that specify concrete transformation goals and are to be implemented through R&I projects as well as political measures and frameworks. Agile policy action is required to successfully realise New Mission Orientation.



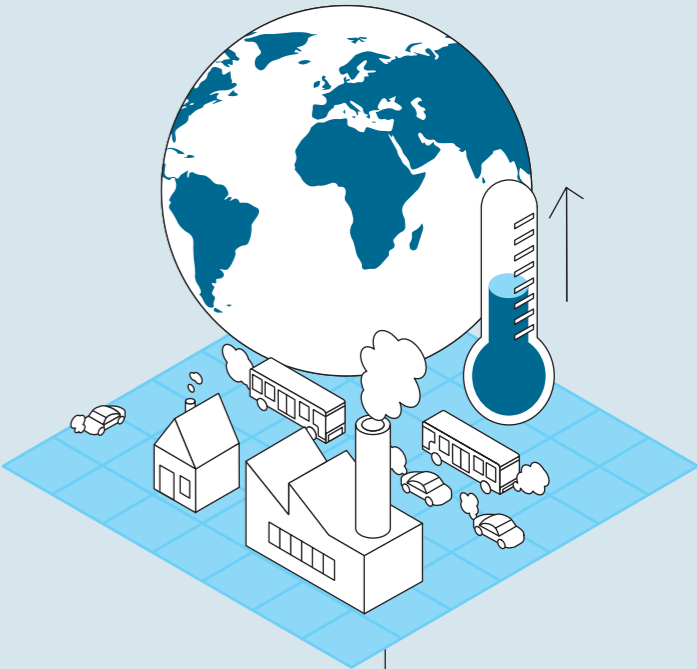
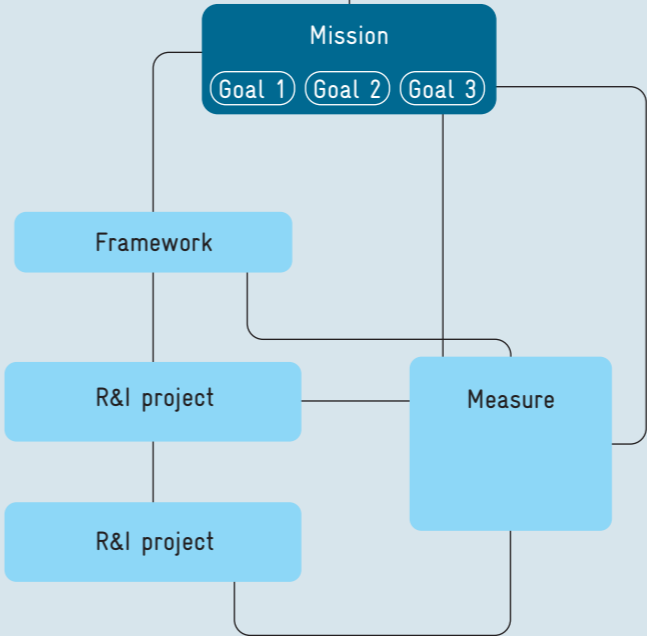
Societal challenge:
Health and well-being



Societal challenge:
Protect life under water



Societal challenge:
Demographic change



Societal challenge:
Implement climate protection

