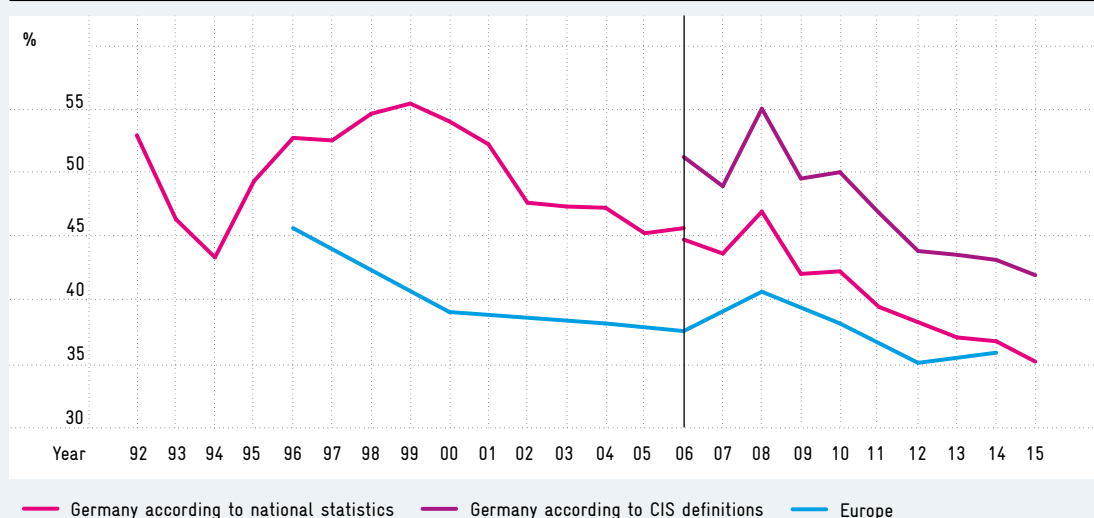


## Development of the innovator rate in Germany and Europe as percentages



Reference basis according to national statistics: 1992–2006: divisions 10–37, 51, 60–64, 65–67, 72–74, 90 of 2003 WZ classification; 2006–2015: divisions 5–39, 46, 49–53, 58–66, 69–74, 78–82 of 2008 WZ classification. Companies with five or more employees. 2006: break in time series. Reference basis according to CIS definitions: divisions 5–39, 46, 49–53, 58–66, 71–73 of 2008 WZ classification. Companies with 10 or more employees. The data for Europe relate to the following countries: Austria, Belgium, Denmark, Finland, France, Germany, Ireland, Italy, Luxembourg, Netherlands, Norway, Portugal, Spain, Sweden, United Kingdom. Sources: Mannheim Innovation Panel and Eurostat, Community Innovation Surveys. Calculations by ZEW (Centre for European Economic Research).

© EFI – Commission of Experts for Research and Innovation 2018.